

# Welcome to



Kenton  
Primary  
School

Kindness

Respect

Honesty

Responsibility

Behaviour







# Welcome

Welcome to Kenton Primary School.

I would like to take this opportunity to welcome you to Kenton Primary School. We are very pleased to be part of Ivy Education Trust, involving four other primary schools and three secondary sites.

Our small, rural school sits in the heart of a thriving village, with the amazing Powderham Castle taking pride of place. There is a lovely family feel here, and our hard working and dedicated staff join together to provide the best possible outcomes for all children who attend our school. We are aspirational for our pupils, teaching them that the sky's the limit in what they can achieve in life.

As well as academic success, we want our children to be happy, safe and enjoy coming to school. We teach the children about honesty, responsibility, respect and kindness, which link to our 'secrets of success' learning behaviours. We work hard to inspire the children to become well rounded individuals who develop a love of lifelong learning.

Our curriculum is progressive and exciting, where all subjects are valued. We offer children Forest School and a high-quality sports provision as we work in partnership with both South Dartmoor and Tyrell Sport and Education. We provide many opportunities to sing and play musical instruments or perform on stage and we encourage our children to take on leadership roles wherever possible through our: green team, sports leaders, school council, play leaders, arts leads, librarians and head boy and head girl roles.

We have high expectations for our pupils, and we are so proud of their achievements. This is a very special school, with a wonderful team and an amazing group of children.

We look forward to welcoming you to the Kenton Primary School family.

Mrs Gemma Pattison,  
Headteacher

Proud to be rated Ofsted **Good**





# Our values

At Kenton Primary School we endeavour to provide the following:

**Community** – School life at the heart of the community

**Learning Environment** – Vibrant welcoming spaces to support and stimulate learning

**Adults** – A team of inspiring staff motivating and supporting each other to be the best

**Children** – High-aspiring children with engaging enquiring minds

The children at Kenton Primary have worked hard with adults to identify the key values that we cherish and wish to develop further. These are:

Kindness    Respect    Honesty    Responsibility    Behaviour

At Kenton we have high expectations of behaviour and support all children to follow 'The Kenton Way'. We build our approach around relational practice and believe that every interaction we have with children is essential to shaping their day and supporting them to build a positive relationship with our school community.

## The Kenton Way



Show **kindness** to others.



**Respect** ourselves, others and our school.



Be **honest**.



Be **responsible** and take pride in our learning.



Move around school safely and respectfully.



Kenton  
Primary  
School

# Our school

'The Church House' dates from around the 1550's and is said to be one of the oldest school buildings in Devon. It was originally used as a Poorhouse to the Parish, but in 1818 it was recorded that two rooms were let out as a 'National School' with about 100 pupils.

Nowadays, the school has been re-furbished to house four classrooms, a hall and a library. Although the playground is small, we have a lovely court space to play games as well as climbing equipment and 'Hobbit' land to explore. The school also has its own field and we visit Methley Meadow for our forest school sessions.

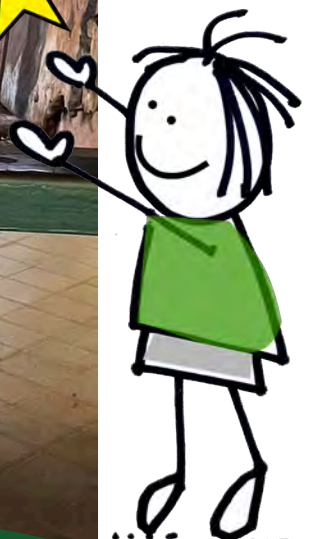
The children play a key part in developing the school and our school leaders such as School Council and The Green Team, democratically decide on ways to improve the school. This year they have introduced a range on playtime clubs, ordered new books to develop reading for pleasure and chosen play equipment to enhance our outdoor area.

The children at Kenton love school because...

"We go on exciting trips to places like Plymouth Aquarium, Kents Cavern and the zoo."

"We have brilliant lessons and do exciting experiments in Science."

"The people at the school are really kind and we work together"



# How classes are organised

Kenton Primary School has classes from reception to Year 6 (7 years).

*Our classes are as followed:*



## Willow Class

### Reception, Year 1 and Year 2

Our reception classes follow the Early Years Foundation Stage (EYFS) framework. This curriculum is based upon four themes and principles;

**Unique Child** – Every child is a unique child who is constantly learning and can be resilient, capable, confident and self assured.

**Positive Relationships** – Children learn to be strong and independent through positive relationships.

**Enabling Environments** – Children learn and develop well in enabling environments, in which their experiences respond to their individual needs and there is a strong partnership between practitioners and parents and carers.

**Learning and Development** – Children develop and learn in different ways. The framework covers the education and care of all children in early years provision, including children with special educational needs and disabilities.

Willow class are carefully timetabled so that all children are taught in small, guided groups to deliver a bespoke curriculum matched to the needs of individuals. Willow class are taught by Miss Lemon and the teaching assistants supporting in this class are: Miss Williams and Mrs Ridgers.



## Oak Class

### Year 3 and Year 4

Oak Class are taught by Miss Webber and the teaching assistant working in this class is Mrs Jacobs. Oak class include children in Year 3 and 4, they are taught in small targeted groups where children are challenged and supported to achieve their very best.



## Chestnut Class

### Year 5 and Year 6

Chestnut Class are taught by Mr Keirle, the teaching assistant working in this class is Mrs Wood. Chestnut class include children in Year 5 and 6, they are taught in small targeted groups and embed their skills and knowledge of the Key Stage 2 curriculum, to ensure that they leave Kenton Primary School fully prepared for the next steps in their education journey.



As a small school, we have a unique opportunity to really know each child as an individual.

Within a class the teacher adopts a variety of organisational strategies depending on the purpose and nature of the activity taking place. This could mean that teaching would be directed to the whole class or a group of children. Grouping arrangements are usually flexible and will also vary according to the task.

Each class teacher is able to teach a broad curriculum including the core subjects. They are supported by the use of specialist curriculum leaders (Maths, English, Science, Computing, PE, Hums and Music) who co-ordinate, advise and work alongside colleagues within the classroom.

We employ a number of teaching assistants to help and support the work of the class teacher. Teaching assistants help with both individual children and groups; they assist with the supervision but more importantly are well trained and skilled in supporting early phonics, speech and language, calculation in Maths and relational support to name but a few of their key areas of expertise.



“Since starting school my little boy’s confidence has grown and he is thriving. He comes home every day excited to tell me about what he has been learning and he has already made lots of friends”

WILLOW CLASS PARENT



# Starting at Kenton Primary

Kenton Primary School is maintained by Devon County Council whom allocates places and manages admissions for the school.

Applications for places are then administered by Devon County Council. You should apply online for places at the Devon County Council website.

Our school currently has a planned admission number (PAN) of 15 in each year group.

If the school is oversubscribed in that year then the Authority has admission criteria, to determine which pupils should have the available places:

1. Looked after children and children who were previously looked after but immediately after being looked after became subject to adoption, a child arrangements order or special guardianship order.
2. Children based on their exceptional medical or social needs or those of their parents.

4. Children living within the catchment area who are siblings of pupils on roll.
5. Children living within the catchment area.
6. Children living outside the catchment area, who are siblings of pupils on roll.
7. Children of members of staff who have been employed in the school for a minimum of two years.
8. Other children Parents can make an appeal for a place through the School Admissions Appeal Committee.

The local authority now manages the School Admissions Code: [admissions@devon.gov.uk](mailto:admissions@devon.gov.uk)

For applications for admission to other year groups in the school please contact Devon Education on 0845 155 1019, or email [admissions@devon.gov.uk](mailto:admissions@devon.gov.uk).



## At Kenton Primary School we provide:

- **Wrap around care** from 7:45am – 6:00pm
- School life at the heart of the **community**
- **Vibrant welcoming spaces** to support and stimulate learning
- A team of **inspiring staff** supporting each other to be the best
- Fantastic **Forest School**
- High-quality **sports provision**



Parents who are considering applying for a place are welcome to come and visit the school and meet with the Head of School, Gemma Pattison. Please get in contact with us to make an appointment.

Phone 01626 890465 or email [admin@kentonschool.co.uk](mailto:admin@kentonschool.co.uk)



# Clubs and Enrichment

At Kenton Primary School, we encourage our students to participate in a range of after school clubs.

At lunch times the children can play outside and take part in a range of games and activities run by our school play leaders (Key Stage 2 children who are trained to set up and support with games at play times).

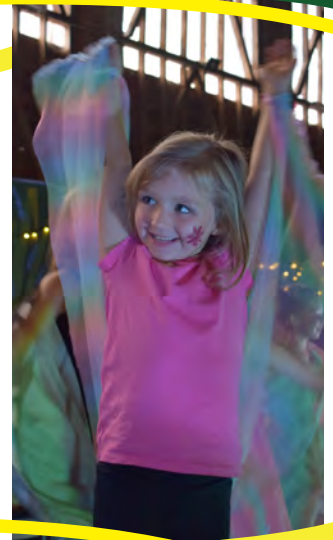
There are also a range of lunchtime clubs on offer, including: netball, art club, chess club and book club.

We encourage all pupils to take part in competitive matches and tournaments including football, tag rugby, high 5 netball, swimming, rounders, athletics, and cricket. We look to ensure that all pupils in Key Stage 2 compete against other schools, no matter what their ability.

We have visits from trained professionals to help improve and extend a variety of areas of sport. We take part in many competitive fixtures both inside and outside of our learning community.

Our afterschool clubs offer the opportunity for children to develop their skills in Sport and Music and currently include, football, gymnastics, and a school choir.

We carefully map trips and visits for each class across the year so that children's experience of the curriculum is truly unmissable. Each half term all classes will have an exciting 'hook' to get them excited and curious about their new learning.















Kenton  
Primary  
School

Email: [admin@kentonschool.co.uk](mailto:admin@kentonschool.co.uk) Tel: 01626 890465  
Mamhead Road, Kenton, Exeter, Devon, EX6 8LX